

National Park Service area

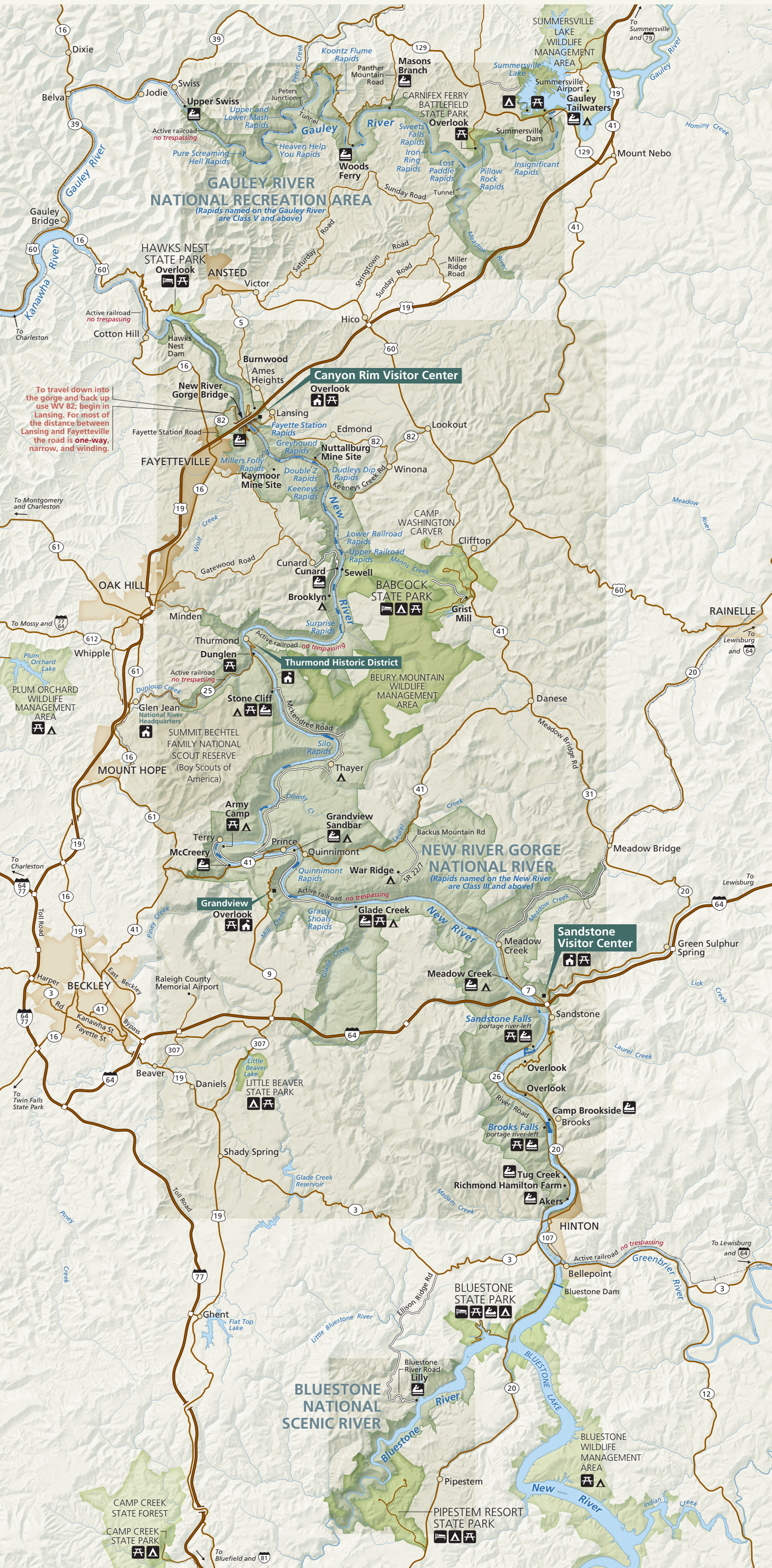
Much of the land within the National Park Service areas remains private property; please respect the owners' rights.

Rapids

The degree of difficulty varies from rapid to rapid and with water level. River users should consult with an experienced river runner or ranger before attempting river running.

- Unpaved road
- Ranger station
- Picnic area
- Public river access

- Lodging
- Campground
- Primitive campsite



To travel down into the gorge and back up use WV 82; begin in Lansing. For most of the distance between Lansing and Fayetteville the road is one-way, narrow, and winding.

To Montgomery and Charleston

To Mossy and

To Charleston

To Twin Falls State Park

Canyon Rim Visitor Center

Thurmond Historic District

Sandstone Visitor Center

BLUESTONE NATIONAL SCENIC RIVER

CAMP CREEK STATE FOREST
CAMP CREEK STATE PARK

PIPESTEM RESORT STATE PARK

BLUESTONE WILDLIFE MANAGEMENT AREA

PLUM ORCHARD WILDLIFE MANAGEMENT AREA

SUMMIT BECHTEL FAMILY NATIONAL SCOUT RESERVE (Boy Scouts of America)

BEURY MOUNTAIN WILDLIFE MANAGEMENT AREA

CAMP WASHINGTON CARVER

PIPESTEM RESORT STATE PARK

BLUESTONE WILDLIFE MANAGEMENT AREA

BLUESTONE WILDLIFE MANAGEMENT AREA

BLUESTONE WILDLIFE MANAGEMENT AREA

BLUESTONE WILDLIFE MANAGEMENT AREA

BLUESTONE WILDLIFE MANAGEMENT AREA

BLUESTONE WILDLIFE MANAGEMENT AREA

BLUESTONE WILDLIFE MANAGEMENT AREA

BLUESTONE WILDLIFE MANAGEMENT AREA

BLUESTONE WILDLIFE MANAGEMENT AREA

BLUESTONE WILDLIFE MANAGEMENT AREA

BLUESTONE WILDLIFE MANAGEMENT AREA

BLUESTONE WILDLIFE MANAGEMENT AREA

BLUESTONE WILDLIFE MANAGEMENT AREA

BLUESTONE WILDLIFE MANAGEMENT AREA

BLUESTONE WILDLIFE MANAGEMENT AREA

BLUESTONE WILDLIFE MANAGEMENT AREA

BLUESTONE WILDLIFE MANAGEMENT AREA

BLUESTONE WILDLIFE MANAGEMENT AREA

BLUESTONE WILDLIFE MANAGEMENT AREA

BLUESTONE WILDLIFE MANAGEMENT AREA

BLUESTONE WILDLIFE MANAGEMENT AREA

BLUESTONE WILDLIFE MANAGEMENT AREA

BLUESTONE WILDLIFE MANAGEMENT AREA

BLUESTONE WILDLIFE MANAGEMENT AREA

BLUESTONE WILDLIFE MANAGEMENT AREA

BLUESTONE WILDLIFE MANAGEMENT AREA

BLUESTONE WILDLIFE MANAGEMENT AREA

BLUESTONE WILDLIFE MANAGEMENT AREA

BLUESTONE WILDLIFE MANAGEMENT AREA

BLUESTONE WILDLIFE MANAGEMENT AREA

BLUESTONE WILDLIFE MANAGEMENT AREA

BLUESTONE WILDLIFE MANAGEMENT AREA

BLUESTONE WILDLIFE MANAGEMENT AREA

BLUESTONE WILDLIFE MANAGEMENT AREA

BLUESTONE WILDLIFE MANAGEMENT AREA

BLUESTONE WILDLIFE MANAGEMENT AREA

BLUESTONE WILDLIFE MANAGEMENT AREA

BLUESTONE WILDLIFE MANAGEMENT AREA

BLUESTONE WILDLIFE MANAGEMENT AREA

BLUESTONE WILDLIFE MANAGEMENT AREA

BLUESTONE WILDLIFE MANAGEMENT AREA

BLUESTONE WILDLIFE MANAGEMENT AREA

BLUESTONE WILDLIFE MANAGEMENT AREA

BLUESTONE WILDLIFE MANAGEMENT AREA

BLUESTONE WILDLIFE MANAGEMENT AREA

BLUESTONE WILDLIFE MANAGEMENT AREA

BLUESTONE WILDLIFE MANAGEMENT AREA

BLUESTONE WILDLIFE MANAGEMENT AREA

BLUESTONE WILDLIFE MANAGEMENT AREA

BLUESTONE WILDLIFE MANAGEMENT AREA

BLUESTONE WILDLIFE MANAGEMENT AREA

BLUESTONE WILDLIFE MANAGEMENT AREA

BLUESTONE WILDLIFE MANAGEMENT AREA

BLUESTONE WILDLIFE MANAGEMENT AREA

BLUESTONE WILDLIFE MANAGEMENT AREA

BLUESTONE WILDLIFE MANAGEMENT AREA

BLUESTONE WILDLIFE MANAGEMENT AREA

BLUESTONE WILDLIFE MANAGEMENT AREA

BLUESTONE WILDLIFE MANAGEMENT AREA

BLUESTONE WILDLIFE MANAGEMENT AREA

BLUESTONE WILDLIFE MANAGEMENT AREA

BLUESTONE WILDLIFE MANAGEMENT AREA

BLUESTONE WILDLIFE MANAGEMENT AREA

BLUESTONE WILDLIFE MANAGEMENT AREA

BLUESTONE WILDLIFE MANAGEMENT AREA

BLUESTONE WILDLIFE MANAGEMENT AREA

BLUESTONE WILDLIFE MANAGEMENT AREA

BLUESTONE WILDLIFE MANAGEMENT AREA

BLUESTONE WILDLIFE MANAGEMENT AREA

BLUESTONE WILDLIFE MANAGEMENT AREA

BLUESTONE WILDLIFE MANAGEMENT AREA

BLUESTONE WILDLIFE MANAGEMENT AREA

BLUESTONE WILDLIFE MANAGEMENT AREA

BLUESTONE WILDLIFE MANAGEMENT AREA

BLUESTONE WILDLIFE MANAGEMENT AREA

BLUESTONE WILDLIFE MANAGEMENT AREA

BLUESTONE WILDLIFE MANAGEMENT AREA

BLUESTONE WILDLIFE MANAGEMENT AREA

BLUESTONE WILDLIFE MANAGEMENT AREA

BLUESTONE WILDLIFE MANAGEMENT AREA

BLUESTONE WILDLIFE MANAGEMENT AREA

BLUESTONE WILDLIFE MANAGEMENT AREA

BLUESTONE WILDLIFE MANAGEMENT AREA

BLUESTONE WILDLIFE MANAGEMENT AREA

BLUESTONE WILDLIFE MANAGEMENT AREA

BLUESTONE WILDLIFE MANAGEMENT AREA

BLUESTONE WILDLIFE MANAGEMENT AREA

BLUESTONE WILDLIFE MANAGEMENT AREA

BLUESTONE WILDLIFE MANAGEMENT AREA

BLUESTONE WILDLIFE MANAGEMENT AREA

BLUESTONE WILDLIFE MANAGEMENT AREA

BLUESTONE WILDLIFE MANAGEMENT AREA

BLUESTONE WILDLIFE MANAGEMENT AREA

BLUESTONE WILDLIFE MANAGEMENT AREA

BLUESTONE WILDLIFE MANAGEMENT AREA

BLUESTONE WILDLIFE MANAGEMENT AREA